

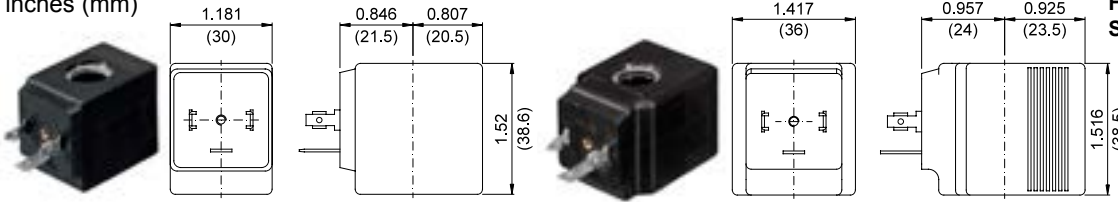
| COILS Code ② | Alternating Current | | | | | | Direct Current | | | | Electrical connection | Connectors |
|------------------------|---------------------|-----|----------|-----|----------|-----|----------------|-----|----------|-----|-----------------------|--------------------------|
| | 24V | | 120V | | 240V | | 12V | | 24V | | | |
| Series 2 Width 30mm | U25B | 201 | U25D | 20D | U25F | 20F | U250 | 200 | U251 | 201 | DIN 43650A | PG9 code 10349000 |
| Series 5 Width 36mm | U55B | 521 | U55D | 52D | U55F | 52F | U550 | 520 | U551 | 521 | DIN 43650A | PG11 code 10349001 |

DESCRIPTION
 Insulation class F or H
 Voltage tolerance ±10%
 Protection class:
 IP65 with connector attached
 IP00 without connector
 Continuous service ED100%

OPTIONS
 Cable attached
 Special coil voltage
 Special coil powers

OVERALL DIMENSIONS

inches (mm)



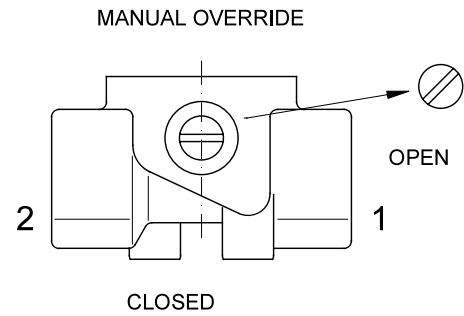
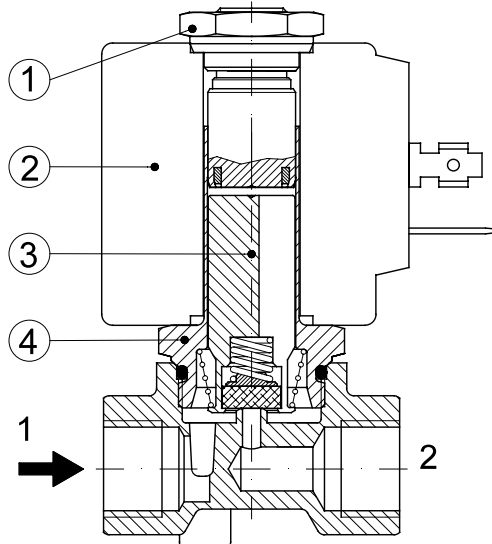
Series 2 Weight 0.26lb (0.12Kg)

Series 5 Weight 0.44lb (0.20Kg)

FOR COIL SPECIFICATION SEE SECTION 6

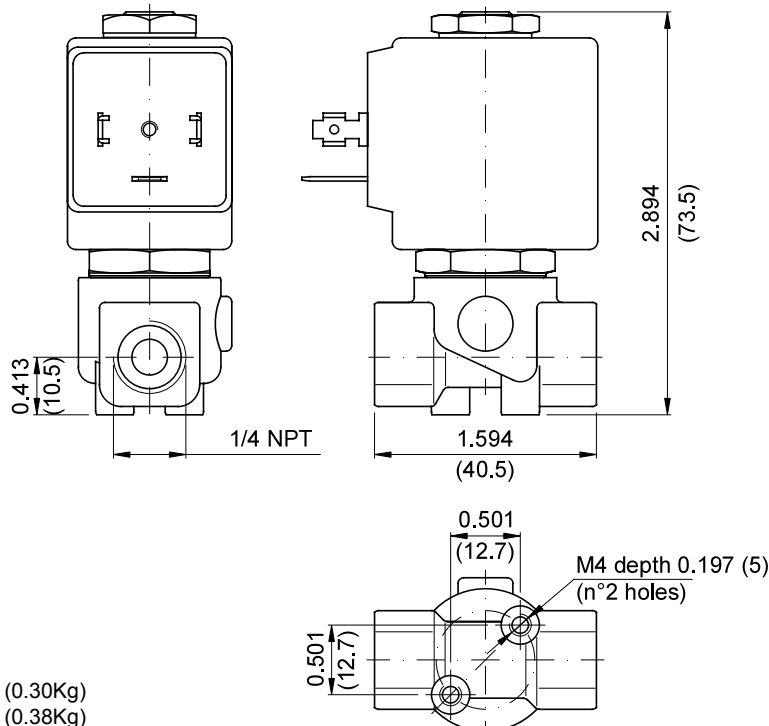
SPARE PARTS LIST

1. Coil fixing nut
2. Coil
3. Plunger assembly
4. Armature tube assembly



OVERALL DIMENSIONS

inches (mm)



Weight with coil series 2=0.66lb (0.30Kg)
 Weight with coil series 5=0.84lb (0.38Kg)

DESCRIPTION

Solenoid valve 2 way normally closed
direct acting poppet type

CONSTRUCTION

| | |
|------------------|-------------------------|
| Body | Brass |
| Armature tube | AISI 303 |
| Plunger and core | AISI 430FR |
| Springs | AISI 302 |
| Seal material | NBR - FPM - EPDM - PTFE |

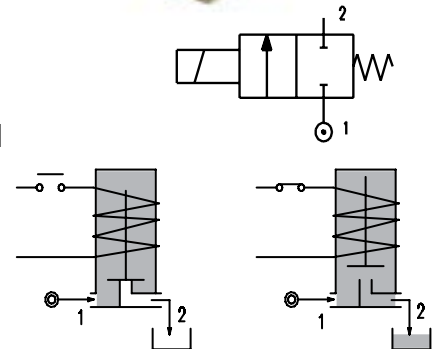


2

FEATURES

Maximum fluid viscosity 25cSt (mm²/s)
Ambient temperature: from +14°F to +176°F according to the coil
Universal mounting position

OPTIONS: Electroless nickel plating
Stainless steel seat insert (up to Ø0.177in)
Version for use with industrial oxygen



ON REQUEST: Versions for use with fluid temperature at -40°C

| CODE ① ② ③ | Port Size NPT | Orifice Size | | Flow Factor Cv | Operating Pressure Differential (M.O.P.D.) ⑤ | | | | Nominal power | | | Coil | | Seal ② | Temp. range (°F) | |
|---------------------|------------------|--------------|------|-------------------|--|-------|-------|------------|---------------|--------|---------------|-------|-------|-----------|---------------------|----------|
| | | (in) | (mm) | | Min | Max | | AC (VA) | DC (W) | Series | Width (mm) | | | | | |
| | | | | | | (psi) | (bar) | | | | | (psi) | (bar) | | | |
| E106...N...30///... | 3/8 1/2 | 0.118 | 3 | 0.289 | 0 | 188 | 13 | 145 | 10 | 20 | 15 | 10 | 2 | 30 | NBR=B | +14 +194 |
| E106...N...35///... | | 0.138 | 3.5 | 0.370 | 0 | 145 | 10 | 108 | 7.5 | | | | | | | |
| E106...N...40///... | | 0.157 | 4 | 0.416 | 0 | 108 | 7.5 | 72.5 | 5 | | | | | | | |
| E106...N...45///... | | 0.177 | 4.5 | 0.474 | 0 | 79 | 5.5 | 43.5 | 3 | | | | | | | |
| E106...N...52///... | | 0.205 | 5.2 | 0.543 | 0 | 50 | 3.5 | 29 | 2 | | | | | | | |
| E106...N...64///... | | 0.252 | 6.4 | 0.740 | 0 | 29 | 2 | 14.5 | 1 | | | | | | | |
| E106...N...30///... | 3/8 1/2 | 0.118 | 3 | 0.289 | 0 | 319 | 22 | 261 | 18 | 27 | 20 | 14 | 5 | 36 | EPDM=E | +14 +284 |
| E106...N...35///... | | 0.138 | 3.5 | 0.370 | 0 | 261 | 18 | 217 | 15 | | | | | | | |
| E106...N...40///... | | 0.157 | 4 | 0.416 | 0 | 188 | 13 | 145 | 10 | | | | | | | |
| E106...N...45///... | | 0.177 | 4.5 | 0.474 | 0 | 152 | 10.5 | 79 | 5.5 | | | | | | | |
| E106...N...52///... | | 0.205 | 5.2 | 0.543 | 0 | 108 | 7.5 | 58 | 4 | | | | | | | |
| E106...N...64///... | | 0.252 | 6.4 | 0.740 | 0 | 58 | 4 | 29 | 2 | | | | | | | |
| E106...N...30///... | 3/8 1/2 | 0.118 | 3 | 0.289 | 0 | 362 | 25 | 348 | 24 | 40 | 30 | 27 | 5 | 36 | PTFE=W ④ | +14 +356 |
| E106...N...35///... | | 0.138 | 3.5 | 0.370 | 0 | 290 | 20 | 275 | 19 | | | | | | | |
| E106...N...40///... | | 0.157 | 4 | 0.416 | 0 | 232 | 16 | 217 | 15 | | | | | | | |
| E106...N...45///... | | 0.177 | 4.5 | 0.474 | 0 | 203 | 14 | 188 | 13 | | | | | | | |
| E106...N...52///... | | 0.205 | 5.2 | 0.543 | 0 | 145 | 10 | 130 | 9 | | | | | | | |
| E106...N...64///... | | 0.252 | 6.4 | 0.740 | 0 | 72.5 | 5 | 65 | 4.5 | | | | | | | |

① Port size: C=3/8 D=1/2

② Seal Ordination example: E106CNB20///U25B NBR seal, connection 3/8 NPT

③ Coil Coil 24V 60Hz certified cRU_{US} and marked CE

④ For PTFE seals the maximum allowable leakage is 0,0008gpm

⑤ Safe Working Pressure:1450 psi. Is the line or system pressure to which the valve may be subjected without being damaged.
The maximum allowable pressure PS for steam is 87 psi with PTFE seals and 36 psi with EPDM seals.

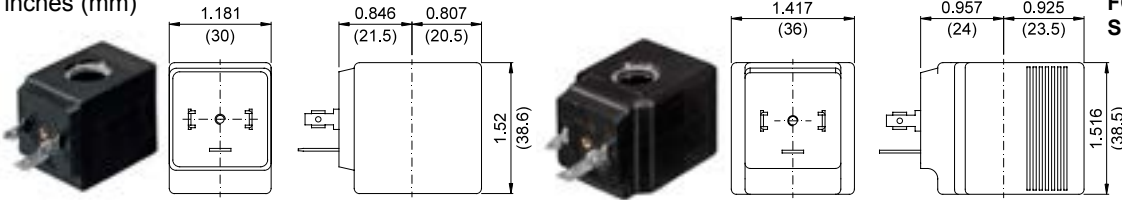
| COILS Code ③ | Alternating Current | | | | | | Direct Current | | | | Electrical connection | Connectors |
|------------------------|---------------------|-----|---------------|-----|---------------|-----|----------------|-----|---------------|-----|--------------------------|--------------------------|
| | 24V | | 120V | | 240V | | 12V | | 24V | | | |
| Series 2 Width 30mm | U25B c us | 201 | U25D c us | 20D | U25F c us | 20F | U250 c us | 200 | U251 c us | 201 | DIN 43650A | PG9 code 10349000 |
| Series 5 Width 36mm | U55B c us | 521 | U55D c us | 52D | U55F c us | 52F | U550 c us | 520 | U551 c us | 521 | DIN 43650A | PG11 code 10349001 |

DESCRIPTION
 Insulation class F or H
 Voltage tolerance ±10%
 Protection class:
 IP65 with connector attached
 IP00 without connector
 Continuous service ED100%

OPTIONS
 Cable attached
 Special coil voltage
 Special coil powers

OVERALL DIMENSIONS

inches (mm)



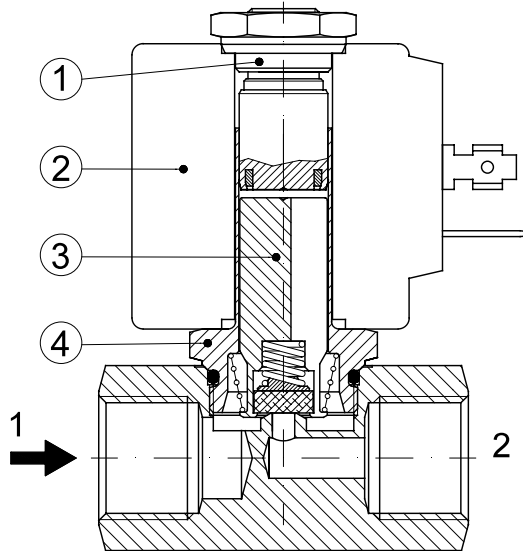
Series 2 Weight 0.26lb (0.12Kg)

Series 5 Weight 0.44lb (0.20Kg)

FOR COIL SPECIFICATION SEE SECTION 6

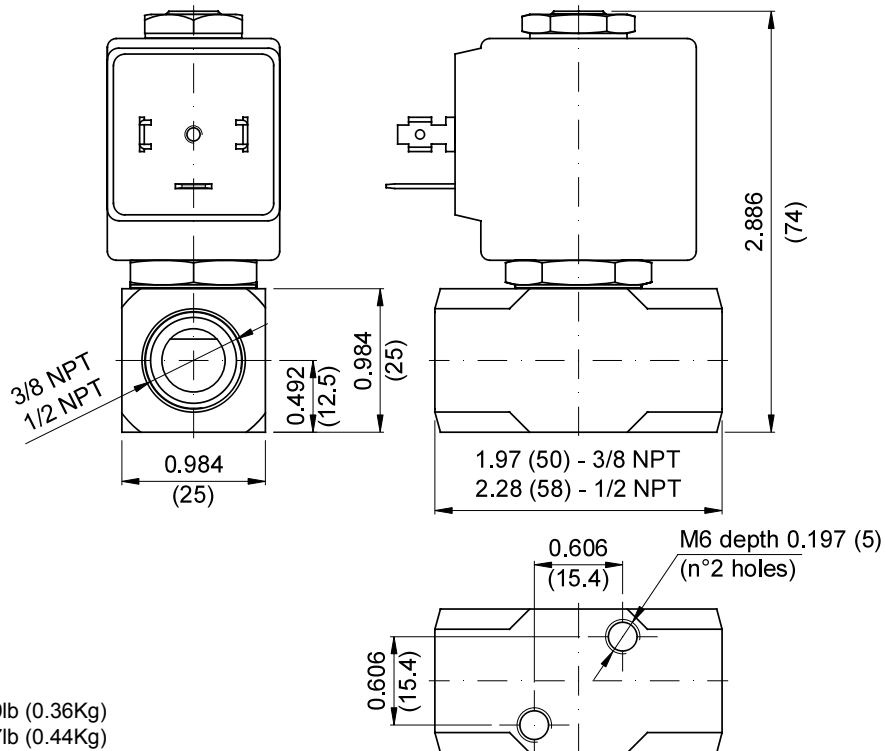
SPARE PARTS LIST

1. Coil fixing nut
2. Coil
3. Plunger assembly
4. Armature tube assembly



OVERALL DIMENSIONS

inches (mm)



Weight with coil series 2=0.79lb (0.36Kg)
 Weight with coil series 5=0.97lb (0.44Kg)