

DESCRIPTION

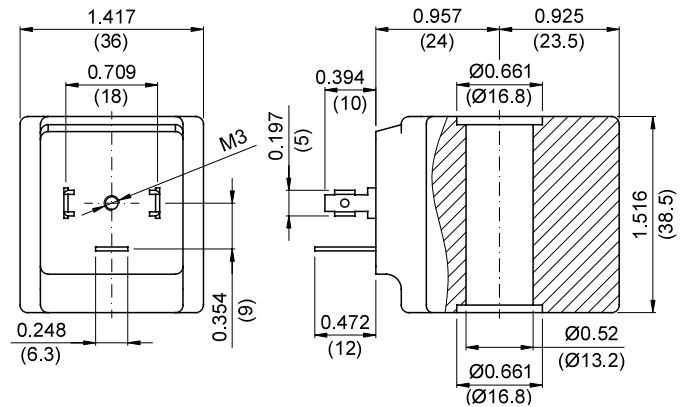
Encapsulated coil incorporating the magnetic circuit.
 Fixing by means of a central nut.
 Electrical connection according to DIN 43650 A
 (A EN 175301-803 ISO 4400)



CONSTRUCTION

Encapsulation: Fibre-glass Polyarylamide
 Class H Zinc-plated steel
 Magnetic circuit Copper covered with class H insulation
 Windings class H +14°F +176°F
 Ambient temperature: UL coils +14°F +140°F

OPTIONS: Electrical connection through cable
 Special powers and voltages
 Self-extinguish



CODE Class H insulation	Alternating Current Voltage	Direct Current Voltage (V)	Power ①		Voltage tolerance		Connector	Service ED
			Alternating Current (VA)	Direct Current (W)	Alternating current	Direct current		
52A	12V 50/60Hz	-	30	-	+15%	-	10349000	100%
52B	24V 50/60Hz	-						
52C	48V 50/60Hz	-						
52D	110V 50/60Hz	-						
52E	220/230V 50/60Hz	-						
52F	240V 50/60Hz	-						
52G	380V 50/60Hz	-						
520	-	12	-	27	-	±10%		
521	-	24						
522	-	48						

Certified version CULUS

U55B	24V 60Hz	-	20	-	±10%	-	10349000	100%
U55D	120V 60Hz	-						
U55F	240V 60Hz	-						
U550	-	12	-	14	-	±10%		
U551	-	24						

① Considering nominal voltage and an ambient temperature of +68°F (+20°C)